

SmartCom



CraneSTAR
Diag



Top Site



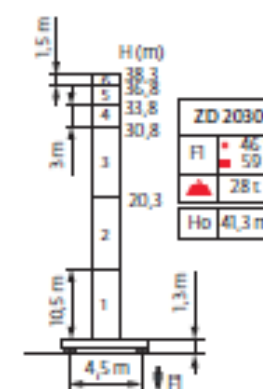
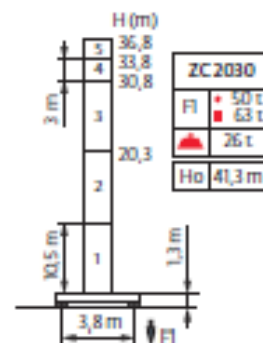
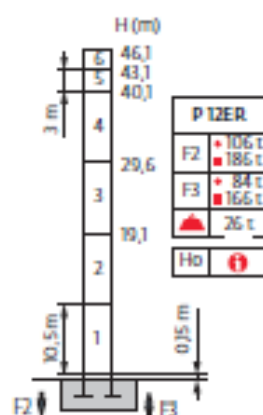
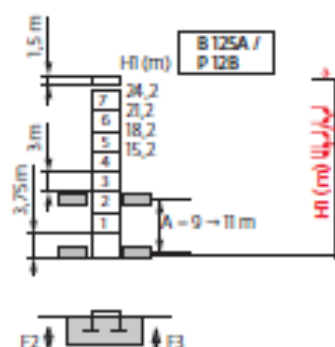
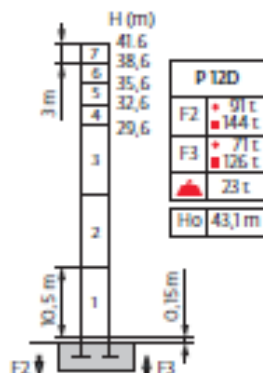
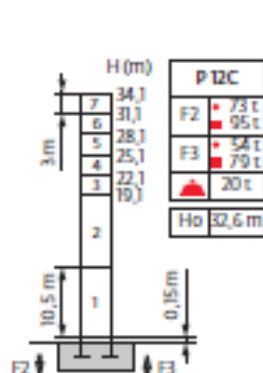
Anti-collision
system



Mât - Réactions / Mast - Reaktionskräfte / Mast - Reactions / Mástil - Reacciones / Torre - Reazioni / Tramo - Reações / Реакция опор мачты

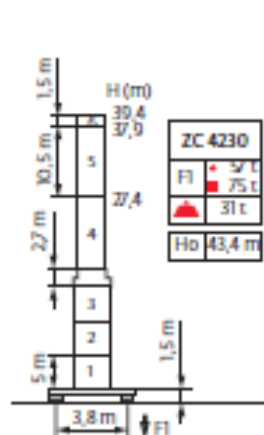
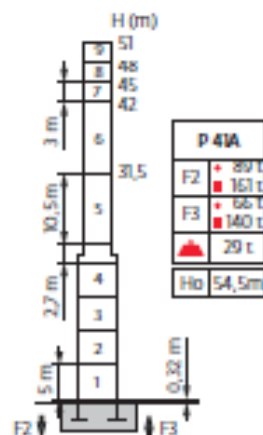
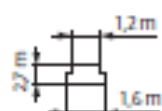
1,2 m

20 m → 52 m



1,6 m / 1,2 m

20 m → 52 m



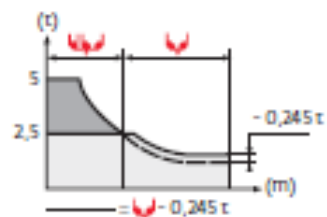
H (m) / H (m)

ZC 4230		H1 = H		H2 = H + 0,3 m		H3 = H + 0,2 m
ZC 2030		H1 = H		H2 = H + 0,3 m		H3 = H + 0,2 m
ZD 2030		H1 = H		H2 = H + 0,3 m		H3 = H + 0,2 m

Courbes de charges / Lastkurven / Load curves / Curvas de cargas / Curve di carico
Curvas de carga / Кривые нагрузок

لها لها

52 m	2,7	▶	13,7	15	17	20	22	24,3	26,4	27	30	32	35	37	40	42	45	47	50	52	m
لها			5	4,5	3,9	3,2	2,85	2,5	2,5	2,45	2,15	2	1,8	1,7	1,55	1,45	1,3	1,25	1,15	1,1	t
50 m	2,7	▶	15,9	17	20	22	25	27	28,3	30,7	32	35	37	40	42	45	47	50	m		
لها			5	4,6	3,8	3,4	2,9	2,65	2,5	2,5	2,4	2,15	2	1,85	1,75	1,6	1,5	1,4	t		
45 m	2,7	▶	16,3	17	20	22	25	27	29,1	31,6	32	35	37	40	42	45	m				
لها			5	4,8	3,9	3,5	3	2,75	2,5	2,5	2,45	2,2	2,1	1,9	1,8	1,65	t				
40 m	2,7	▶	16,4	17	20	22	25	27	29,1	31,6	32	35	37	40	m						
لها			5	4,8	3,9	3,5	3	2,75	2,5	2,5	2,45	2,2	2,1	1,9	t						
35 m	2,7	▶	16,4	17	20	22	25	27	29,1	31,6	32	35	m								
لها			5	4,8	3,9	3,5	3	2,75	2,5	2,5	2,45	2,22	t								
30 m	2,7	▶	16,3	17	20	22	25	27	29	30	m										
لها			5	4,8	3,9	3,5	3	2,75	2,5	2,5	t										
25 m	2,7	▶	16,3	17	20	22	25	m													
لها			5	4,8	3,95	t															
20 m	2,7	▶	16,3	17	20	m															
لها			5	4,8	3,95	t															



لها

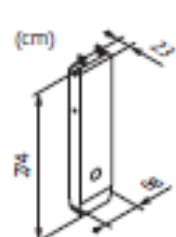
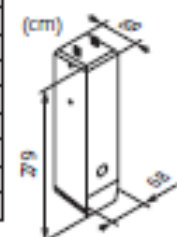
52 m	2,05	▶				22,9	25	27	30	32	35	37	40	42	45	47	50	52	m
لها						3	2,7	2,5	2,2	2,05	1,85	1,75	1,6	1,5	1,35	1,3	1,2	1,15	t
50 m	2,05	▶				26,6	27	30	32	35	37	40	42	45	47	50	m		
لها						3	2,95	2,6	2,45	2,2	2,05	1,9	1,8	1,65	1,55	1,45	t		
45 m	2,05	▶				27,4	30	32	35	37	40	42	45	m					
لها						3	2,7	2,5	2,25	2,15	1,95	1,85	1,7	t					
40 m	2,05	▶				27,4	30	32	35	37	40	m							
لها						3	2,7	2,5	2,25	2,15	1,95	t							
35 m	2,05	▶				27,4	30	32	35	m									
لها						3	2,7	2,5	2,27	t									
30 m	2,05	▶				27,4	30	m											
لها						3	2,7	t											
25 m	2,05	▶			25	m													
لها					3	t													
20 m	2,05	▶		20	m														
لها				3	t														

Poids de flèche & lest de contre-flèche / Auslegergewicht & Gegenauslegerballast / Jib weight & counter-jib ballast / Peso de flecha y lastre de contra-flecha / Peso del braccio & zavorra di contro-braccio / Peso da lança & lastro da contra lança
Вес стрелы и балласт контр-стрелы



لها	لها (kg) - 25 LVF (+/- 5%)			لها		
	لها (2,5 t)	لها لها لها	لها (3 t)	3000 kg	1000 kg	لها (kg)
52 m	5825	5890	5755	3	4	13000
50 m	5765	5830	5695	3	4	13000
45 m	5590	5655	5520	3	3	12000
40 m	5395	5460	5325	3	2	11000
35 m	5110	5175	5040	3	1	10000
30 m	4870	4820	4490	3	0	9000
25 m	4495	4560	4425	2	2	8000
20 m	4095	4160	4025	2	1	7000

CBP- 3000 kg








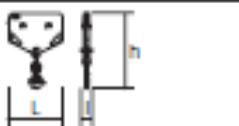



CBQ- 1000 kg











Encombremet et poids / Abmessungen und Gewicht / Dimensions and weight / Dimensiones y peso / Ingombro e peso
dimensões e pesos / габаритные размеры и вес










Partie tournante / Drehender Krantell / Slewing crane part / Parte giratoria
Parte rotante / Parte rotativa / Поворотная часть:  52 m -  25 LVF



Partie tournante / Drehender Krantell / Slewing crane part Parte giratoria / Parte rotante / Parte rotativa Поворотная часть		L (m)	I (m)	h (m)	kg (+/- 5%)
Contre-flèche / Gegenausleger Counter-jib / Contra-flecha Controbraccio / Contra-lança Контр-стрела		11,9 11,9	1,76 1,76	2,47 2,47	4380 4250
Cabine / Kabine Cab / Cabina Cabina / Cabina Кабина		2,9	2,38	3,03	1100
Élément de flèche / Auslegerelement Jib section / Elemento de flecha Elemento di braccio / Elemento de lança Секция стрелы		10,75	1,81	2,2	2565
Élément de flèche / Auslegerelement Jib section / Elemento de flecha Elemento di braccio / Elemento de lança Секция стрелы		10,21	0,8	1,95	1140
Élément de flèche / Auslegerelement Jib section / Elemento de flecha Elemento di braccio / Elemento de lança Секция стрелы		5,17 5,15 5,14 5,13 5,11 5,08	0,8 0,8 0,8 0,8 0,8 0,8	1,91 1,9 1,5 1,48 1,47 1	400 325 290 285 195 75
Élément de flèche / Auslegerelement Jib section / Elemento de flecha Elemento di braccio / Elemento de lança Секция стрелы		2,05	0,8	1	60
Chariot / Laufkatze Trolley / Carrillo Carro / Carro-distribuidor Тележка		0,89	0,95	0,7	120
Moufle / Hubflasche Pulley block / Aparejo Vozzello / Cadernal Полиспаст		0,72	0,16	0,99	110
Chariot / Laufkatze Trolley / Carrillo Carro / Carro-distribuidor Тележка		1,1	1	0,72	130
Chariot / Laufkatze Trolley / Carrillo Carro / Carro-distribuidor Тележка		1,13 1,14	1 1	0,72 0,72	115 165
Moufle / Hubflasche Pulley block / Aparejo Vozzello / Cadernal Полиспаст		1,09 0,74	0,21 0,2	1,38 1,13	235 135

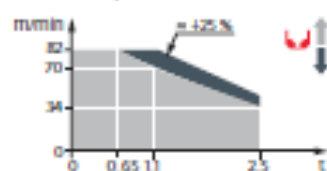
Pyłone / Kransturm / Crane tower Mástil / Torre / Torre Башня крана		L (m)	l (m)	h (m)	kg (+/- 5%)	
S20/S20-2 Mât de telescopage / Teleskopiermast Telescoping mast / Tramo de telescopaje Elemento di telescopaggio / Tramo de Telescopagem Мачта для телескопирования		1,2 m	1,7	1,55	1,6	605
S 24ES-2 SR 24ES-2 SR 26E-2 S 28ES-2 SR 28ER-2		1,2 m	10,7 10,7 10,75 10,75 10,75	1,28 1,26 1,27 1,27 1,27	1,28 1,26 1,27 1,27 1,27	2225 2215 3055 3450 4020
S 24D-2		1,2 m	3,2	1,3	1,28	730
K 440A K 447A		1,6 m	5,21 5,21	1,67 1,67	1,62 1,62	2230 1850
K40/L20-2 Mât raccord / Verbindungsmast Connecting mast / Tramo unión Elemento raccordo / Tramo raccord Переходная мачта		1,6/1,2 m	2,95	2,06	2,1	2100
Pied de scellement / Verankerungsfuss Fixing angles / Pie de empotramiento Montante da annegare / Angulos fixadores анкера		P 12C P 12D P 12ER P 41A	0,3 0,49 0,8 0,37	0,3 0,49 0,8 0,37	1,12 1,12 1,31 1,14	110 165 500 145
Bras de croix / Fundamentkreuzträger Cross girder / Braço em cruz Вращо crosse / Braço da cruz Поперечная балка		ZC 2030 ZC 4230 ZD 2030	5,63 5,64 6,62	0,47 0,47 0,47	1,45 1,34 1,45	1735 1895 1930
Bras de croix / Fundamentkreuzträger Cross girder / Braço em cruz Вращо crosse / Braço da cruz Поперечная балка		ZC 2030 ZC 4230 ZD 2030	5,63 5,64 6,62	0,82 0,82 0,82	1,16 1,05 1,16	1500 1590 1690

Mécanismes / Triebwerke / Mechanisms / Mecanismos / Meccanismi
 Mecanismos / Механизмы

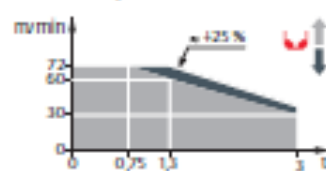
400V - 50 Hz 480V - 60 Hz										ch - PS hp	kW		
	25 LVF 13 Optima	m/min	34	56	70	82	17	28	35	41	25	18	318 m
	t	2,5	1,45	1,1	0,65	5	2,9	2,2	1,3				
	25 LVF 15 Optima	m/min	30	48	60	72					25	18	218 m
	t	3	1,7	1,3	0,75								
	4 DVF 3	m/min	0 → 63							5	3,7		
	RV/F 151 Optima+	rpm U/min rpm	0 → 0,8							5,5	4		
													

 IEC 60204-32	
400V (+10% -10%) 50 Hz 480V (+6% -10%) 60 Hz	25 LVF : 28 kVA

25 LVF 13 Optima



25 LVF 15 Optima



	FR	DE	EN	ES	IT	PT	RU
	Appareil (série)	Ausgerüstete(r) Maschine(n)	standard equipment	aparato de la (s) serie	apparecchio (s) standard	equipamento de série	стандартное оборудование
	Equipements optionnels	Sonderausrüstungen	options	equipamiento opcional	equipaggiamento in opzione	equipamento opcional	дополнительное оборудование (опция)
	réaction en service	Reaktionshöhe in service	reaction in service	reacción en servicio	reazione in servizio	reação em serviço	реакция при работе
	réaction non service	Reaktionshöhe außer service	reaction out of service	reacción fuera de servicio	reazione fuori servizio	reação fora de serviço	реакция в покое
	hauteur sans cabine	ohne ohne Kabine	Height without cab	Altura sin cabina	Altezza senza cabina	Altura sem cabina	высота без кабины
	réaction avec une nacelle avec (s)érie et hauteur maximum	Reaktion ohne Last, ohne Kabine, mit Ausrüstung und max. Höhe	Height without load, without cab, with (s)erie and max. height	Reacción sin carga, con (s)erie y altura máxima	Reazione allo zero carico, con gru e altezza massima	Reação zero sem carga com grua e altura máxima	вес пустого, без нагрузки, со стрелой, максимальной высоты
	réaction (s)érie	Ausgerüstehöhe	height	Reac (s)érie	Reac (s) griglia	Reação (s)érie	вес стрелы
	clearance entre cranes	Auswand definiert den summen	clearance between cranes	clearance entre marcas	clearance (s)erial	clearance entre cranes	расстояние между стрелами кранов
	réaction (s) grue (en service)	Stangehöhe (in service)	crane height (in service)	Reac (s) grúa (en servicio)	Reação (s) grua (em serviço)	Reação (s) grua (em serviço)	вес крана (при работе)
	reaction horizontale	Horizontalkräfte	horizontal reaction	reacción horizontal	reazione orizzontale	reação horizontal	горизонтальная реакция
	clearance	Über 12,4 m	clearance	clearance	clearance	clearance	крановой автомобиль, т.е. и до-опусковой контроль при максимальной высоте, в том числе до-опусковой открытой платформы mast rack
	height	12,4 m	height	altura	altezza	altura	подъем
	distribution	Verteilung	distribution	distribución	distribuzione	distribuição	перевод энергии по стреле
	orientation	orientación	orientation	orientación	orientazione	orientação	поворот
	transmission	Übertragung	transmission	transmisión	trasmissione	transmissão	перевод энергии транс
	auxiliary power	Informations Leistung	auxiliary power	Potencia auxiliar	Potenza ausiliaria	Potência auxiliar	потребляемая мощность
	consult	Auf Anfrage	consult	consulta	consultare	consultar	проконсультируйтесь у нас
	document commercial non contractuel. Pour toute information technique se référer à la notice correspondante.	Umsatzdokument, für technische Informationen, bitte die entsprechenden Anleitungen.	this commercial document is not legally binding. For any technical information, please refer to the corresponding instructions.	documento comercial no contractual. Para cualquier información técnica, ver la noticia correspondiente.	documento commerciale non contrattuale. Per tutte le informazioni tecniche, rivolgersi alle istruzioni corrispondenti.	documento comercial não contratual. Para qualquer informação técnica, consultar o respectivo manual.	этот коммерческий документ не является юридически обязательным. Для получения технической информации, см. соответствующие инструкции.

